

SCOVILL BULLETIN

APRIL, 1966

Published by Scovill Manufacturing Company for its Employees

Review Of 1965 Operations

As a matter of interest to Scovill employees, we are reprinting in the following paragraphs the "Review of Operations" section of the 1965 Annual Report which was recently distributed by the Company.

This section briefly summarizes what took place at each of Scovill's operating divisions during the year 1965.

Gen. Manufacturing Div.

This division, which operates one of the largest contract manufacturing shops in the U.S., had an excellent year in 1965. Its sales rose well above 1964 levels. In addition to its contract business, it also produces its own line of fuel oil, gasoline and garden hose couplings and makes intricate fuse parts for the armed services.

General Manufacturing also produces complete products for those companies not in a position to undertake such production themselves.

During the year Scovill acquired from the U.S. Servicator Corp. its chief product, the Servicator, a dash-board mounted device that automatically tells the driver when his car requires servicing. We are now manufacturing and marketing this product.

This division has completed a new plant for such special products and is expanding its research and development department in line with the greater emphasis now being placed on such products.

Cosmetic Container Div.

In 1965 this division produced more lipstick and other cosmetic containers than in any previous year. However, continuing pressure on prices resulted in only a very moderate gain in sales and in profits.

There is a continuing trend for lipstick containers to become more of a commodity and less of a high style product. This has resulted in the utilization of less costly material such as steel and plastic which, in turn, has made it necessary to sell more containers in order to maintain or increase dollar sales volume.

To improve our competitive position and better satisfy customer requirements for quick service, a new finish-

ing and assembly plant for all of our cosmetic work is now under construction in Montross, Virginia. It is expected to get into production this summer.

Closure Division

1965 was another record sales year for the Closure Division, a highly diversified producer of snap fasteners, zippers and related apparel fasteners. In June, we acquired Conmar Products Corp., a leading producer of zippers with plants in Newark, New Jersey and Greenwood, Mississippi. With the addition of the Conmar product lines, the Closure Division now sells to all major apparel markets for the first time.

The zipper line has been particularly strengthened by the Conmar "Nylaire", a widely used nylon coil slide fastener sold in large volume to the women's wear industry, and for men's trousers. The Conmar acquisition also included a jointly-owned company that sells zippers at notion counters for home sewing, thereby providing us with an entry into this important market.

Mill Products Division

1965 sales of the Mill Products Division, a major producer of brass mill products, copper water tube and aluminum sheet, exceeded the record year of 1964. Copper, our principal alloying material, continued in short supply and rose in price during the year.

Profitability was improved, however, because of operating economies resulting from higher volume and some selective price increases.

Our aluminum sheet business, newly equipped two years ago, became profitable in 1965 because of lower costs and a more selective marketing policy.

(Continued on Page 4, Col. 3)

Gen. Mfg. Div. To Make Hose Ferrules

The General Manufacturing Division has taken over from the A. Schrader Son Division manufacturing and marketing responsibility for their line of hose ferrules and will move the operation to Waterbury.

The first production equipment is being moved from Brooklyn and is being set up and put into operation. Marketing will be done by General Manufacturing Sales Department except for direct sales to rubber companies which will continue to be handled by the Schrader sales force.

Manufacturing equipment is being placed with the General Manufacturing Division eyelet operations which took over from Schrader machines and equipment for manufacturing automobile tire valve caps some months ago.

"In concentrating all production equipment of this type in the company in Waterbury where we have the skills, we expect to achieve a larger share of the market," Vice President C. A. Burnett said. He indicated hose ferrule sales would total approximately \$1 million a year.

1966 Vacations

The Waterbury Divisions and Services will close for vacation starting Monday, July 4th, and will reopen with the start of the first shift on Monday, July 18, 1966. Exceptions to this schedule will be by notification in departments or individual employees.

Employees entitled to more than two weeks of vacation, and those required to work during the shutdown, will be canvassed for their choice of time off. Such vacations must be taken in full calendar weeks. Employees must take all vacation to which they are entitled. Choice of time off will be given preference by seniority, provided the foreman is notified by April 29th.

The Payroll Department must have three weeks' notice prior to the start of vacation in order that the vacation pays can be prepared in advance of an employee's vacation.

Employees who qualify will receive holiday pay for July 4th.

MEMO *from Management:*

Education and Jobs

Unemployment is at its lowest level in many years. But there are still many people without jobs. Why? Mainly because they have no skills or training.

The demands of our labor force are changing — more complex equipment and methods are calling for new skills. Too many unemployed people cannot meet these requirements and are left behind in competition for available jobs.

There are not the job opportunities for the unskilled today that there were a generation ago. Today's jobs place great emphasis on education and training.

But how do you get people to do something about this? How do you convince young people that they should stay in school and get as much education as possible? How do you encourage those with not enough training to go out and get more?

One way is to get the community behind our efforts. More of our citizens must be aware of the facilities in our community to help people get more training and education. More people must know how important it is to encourage those who need this training to take advantage of it.

We have new trade schools and a new high school. We have night school programs and vocational training programs. New Opportunities for Waterbury is working hard to bring new skills to Waterbury people with its Neighborhood Youth Corp and its On-The-Job-Training Program. The Naugatuck Valley Industrial Council started a pre-apprentice training program last summer and is expanding it this summer. The Human Resources Committee of the Mayor's Citizens Advisory Committee, made up of labor, industry, and civic representatives, is working with all of these groups to get more Waterbury area people into better jobs.

The community has made a good start on a difficult problem. But we must get the people who need this training to be aware of it so that they can take advantage of it. A good example of the type of encouragement that we require is the recent series of Sunday evening Lenten Discussion Forums sponsored by the Waterbury Interfaith group. It expresses the type of concern for Waterbury problems that will hopefully lead to action that will bring results.

Good Friday

The Waterbury Divisions will close for Good Friday at the end of the work day on Thursday, April 7, and will reopen with the start of the first shift on Monday, April 11th.

Good Friday is one of the holidays for which employees who qualify are paid when they do not work.

Your Social Security

You've been receiving social security benefits and tomorrow you return to work. You're glad . . . but you're worried, too.

You're glad because a year ago the doctor didn't think you'd ever be able to work again. But, now he's given you the green light.

You're worried because you're wondering whether you can "make it" on the job, and you figure that your social security benefits will stop just as soon as you start working.

Well, you can forget about part of your worries, because the Social Security Administration will continue paying you benefits throughout a nine-month trial work period. Then, if you've regained your ability to work, your benefits won't stop for three additional months.

Remember, though, to notify your social security office promptly. They'll be glad to give you full information — and be sure to show your claim number when you write to them.

Your social security office is at 236 Grand Street, Waterbury. The phone number is 756-7475. If you have any questions about social security, get in touch with them.

Pinochle Tourney

The 52nd season of pinochle playing in Scovill ended with the banquet on Saturday, March 26th. Master of ceremonies was John Matulunas and Joe Brenneis awarded the prizes. Final standings and scores were:—

	<i>1st round</i>	<i>2nd round</i>
Matulunas	336,330	302,725
Hollywood	332,705	295,340
Mancini	324,890	294,165

Individual high scorers, 1st round: Yurkunas 46,580, Mancini 45,350, Rosenbeck 44,960, March 44,095, D'Amelia 44,060.

Individual high scorers, 2nd round: Yurkunas 46,305, D'Amelia 46,100, Nault 45,315, Roberts 44,715, March 44,550.



LABEL IT! Without the labels, could you tell which is which—the shakers at home, or the acid fill connections in the plant? Guess work could ruin a delicious meal or cause serious mix-ups in misuse of acids. When containers are similar in shape and appearance, it is vital that they be properly labeled.

Rod & Gun Club

By Walter Dziura

Our regular monthly meeting was held on Tuesday, March 15th. Vice President *Domenic Cherubini* was among the missing as he was hospitalized with a back injury. We are happy to say that he is now convalescing at home. We all hope you're well enough to enjoy fishing on Opening Day, *Domenic!*

Both the reservoir and the lower pond will be stocked with trout this year, the week before opening day. This should be met with grand approval by the boat fishermen who have felt neglected in the past. Also, we have added two more aluminum boats this year. Everyone who has tried the aluminum boats enjoys fishing in them very much.

The rifle range is coming along well. The outside entrance should be completed by press time. We hope everyone showing an interest in the range will be patient since the Service Departments doing the work have to stop now and then to keep production lines moving in the plant. Keep up the good work, *George!* When the range is completed, we will have a really outstanding place to shoot. Let's hope Senator Dodd doesn't place too many restrictions against us.

Don't forget to attend the spring banquet on April 14th.

The next monthly meeting will be held April 19th at SERA at 7:30 p.m.

It would be interesting to know how many thousand years ago people started labeling things like salt and pepper. Whenever it was, someone wanted to be sure he was right the first time. Later on, but still hundreds of years ago, shapes of containers helped to tell what was what.

But shapes and appearances can be deceiving as in the illustrations above. The only sure bet is to label clearly.

Whether it is a tank, a bottle, a box, or a can—label it for your own convenience and safety, and to help someone who comes along after you.

An unlabeled container is a chance-taking thing at best. This goes for home safety as well as in the plant if serious mix-ups are to be prevented.



1965 Operations

(Continued from Page 1, Col. 2)

During the year, the division installed new equipment in all of its mills. The largest single item—costing over \$1 million — was a continuous annealing line in our brass strip mill.

For 1966, the division has large commitments for defense business, particularly in ammunition metal. Metal is also being produced for the new silverless coins.

Oakville Division

Oakville Division is the nation's largest supplier of bulk and packaged notions, ranging from safety pins to sewing aids. These products are sold through thousands of variety stores and other outlets under such well-known brands as "Clinton". Oakville also produces Gem paper clips and other stationery items, as well as drapery hardware and metal garment accessories.

To industry, Oakville sells automotive and electrical components, metal garment accessories, and custom wire formings and stampings. In all, the division supplies customers throughout the U.S. with some 2500 different mass-produced metal items.

Despite continuing pressures from low-cost imports, this division increased sales in 1965 and maintained profit margins. In mid-1964 Oakville began manufacturing at its new Fayetteville, Tennessee, plant. This facility is currently operating at capacity and plans have been completed for its expansion in 1966.

Hamilton Beach Division

In 1965 Hamilton Beach again set a record in sales, just about doubling its 1964 volume. The "hole-in-the-handle" electric knife was the number one seller in the knife market and blender sales were sharply increased following introduction of a blender cookbook and heavy promotion on television.

Product lines have been streamlined to concentrate on items with the greatest sales and profit potential. Distribution channels have been revised to conform to the division's new marketing approach. A new table food mixer was introduced during the year, and three new electric knife models. One of these knives is a convertible that can be operated on batteries or plugged in.

(Continued on Page 5, Col. 1)

1965 Operations

(Continued from Page 4, Col. 3)

Research and development has been increased considerably to provide new products for future growth. Ground was broken in February 1966 for a new 200,000 square-foot plant in Washington, North Carolina to help meet the rising demand for Hamilton Beach appliances.

During 1965, Puritron, a division acquired in mid-1964, was placed under Hamilton Beach management so that their marketing efforts could be better coordinated. Puritron has established outlets in the home building field — its new "working-wall", which can be built into new or remodelled kitchens, features a can opener, a mixette and an electric knife.

Schrader Division

Schrader, a specialist in controlling air under pressure, increased sales substantially in 1965. Profits made a good recovery after the heavy expenditures associated with the opening of two new plants in 1964.

To develop their full potential, Schrader last year divided its product lines into four profit centers, each with its own marketing, manufacturing, and research facilities.

Automotive Tire Valve Products have been located in a new plant in Dickson, Tennessee.

Industrial Fluid Power Products, which includes valves, cylinders, pressure regulators and other pneumatic devices for industrial automation, have been located in another plant in Wake Forest, North Carolina.

Aerosol Valve Products have just been transferred into a recently completed plant in Manchester, New Hampshire.

General Products, which include such air control specialties as life vest valves, hospital oxygen control valves, and truck tire pressure maintenance system, are located in Brooklyn, New York.

International Operations

Our international business continued to improve in 1965.

The Schrader operations, with eight manufacturing plants in foreign countries, provided the largest share of Scovill's international sales. This business benefited from increased car sales abroad as well as the growing demand for industrial fluid power products, as



"BLESSINGS UPON THEE"—seem to be the sentiments being expressed by Employee Relations Director Milton Burrall at the party honoring Edward DeBisschop who retired after 43 years of service. Also at the head table are: Fred Wilson, Ray Ladden and retired electricians John Oliver and Vic Gould.

Lower photo: Enrico Marchiani was the recipient of warm wishes and happy thoughts which foreman Anthony Laudate expresses on behalf of the employees of Closure Packing. Mr. Marchiani retired with 15 years of service.

other countries move into automated manufacturing.

Scovill-France, a French appliance company acquired in 1964, grew rapidly in 1965. The expenses associated with this growth and with the construction of a new plant were largely written off in the past year and, as a result, profits will be better in 1966. In addition to its line of French-designed appliances, Scovill-France is making and selling the Hamilton Beach "hole-in-the-handle" electric knife.

Another 1964 acquisition, Whitecroft-Scovill Limited in England, has an established position in notions and in 1966 will also begin selling electric knives.

1965 was a year of substantial reorganization for most of our foreign branches and subsidiaries, which should be reflected in more rapid growth in the future.

Traffic Dept.'s Skillful Drivers

Twelve drivers in our Transportation Department were awarded "Skillful Driver" pins recently by Liberty Mutual Insurance Co. The pins represent 132 no accident driving years.

Those receiving the awards, and their records are:—

18 years—John C. Valaitis, Leonard V. Campoli

17 years—John B. Orsini, Elwood Whiting, Jr.

16 years—Milton Wyrick, Jr., Edward J. Walsh

11 years—Robert L. Blackburn

6 years—August Fabiani, Charles DeLuca

5 years—Lawrence C. Wright

1 year—John Vita, Clarence Read

Service Awards

Eileen Hamilton, Closure Production
25 years—March 2, 1966

Peter Baukus, Gen. Mfg. Toolroom
25 years—March 3, 1966

William Dubinsky, Clos. Tl & Mach.
25 years—March 3, 1966

Joseph Donahue, Closure—Dallas
25 years—March 6, 1966

Daniel Guilfoile, Electrical
25 years—March 7, 1966

Joseph Zanavich, Clos. Tl & Mach.
25 years—March 7, 1966

Louis Lavorgna, Coupling
25 years—March 8, 1966

Raymond J. Dolan, Closing Tlrm.
25 years—March 10, 1966

Charles Ancypa, Bldg. 112 Cleaning
25 years—March 13, 1966

Carmen Santoro, Drawing Room
25 years—March 14, 1966

Francis Marinara, Press 1
25 years—March 15, 1966

Joseph Lepo, Strip Mill
25 years—March 16, 1966

Patrick Canese, General Stores
25 years—March 19, 1966

Harold Descoteaux, Rod Mill
25 years—March 20, 1966

Casimir Chrzanowski, Cosmetic Mfg.
25 years—March 21, 1966

Susan Coleman, Relay
25 years—March 24, 1966

Albert Bouffard, Barrel Plating
25 years—March 24, 1966

Elsie Phelan, Cosmetic Finishing
10 years—March 1, 1966

Eugenia Yurkunas, Cos. Assm. & Pk.
10 years—March 1, 1966

James F. Meyers, Gripper Eyelet
10 years—March 3, 1966

Anna Pavone, Gen. Mfg. Acct.
10 years—March 5, 1966

Louis Vanasse, Cosmetic Toolroom
10 years—March 5, 1966

Eleanor Furlong, Central Acct.
10 years—March 12, 1966

Jacquelyn Gilland, Norwood-Mills
10 years—March 12, 1966

George Emmons, Strip Mill
10 years—March 17, 1966

Lucien Calca, New Milford
10 years—March 22, 1966

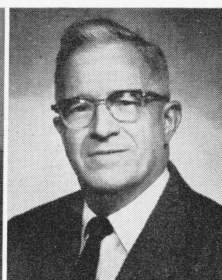
Robert Robinson, Hot Forge
10 years—March 25, 1966

Socrates Ladopoulos, Cosmetic Tool
10 years—March 26, 1966

Olga Zink, Press 1
10 years—March 30, 1966



Raoul Brodeur
Casting
25 yrs—Mar. 11



M. Chas. Brusie
New Milford
25 yrs—Mar. 3



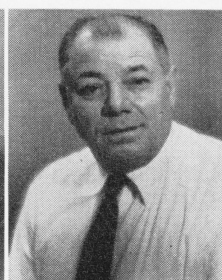
M. John Daniel
Welding
25 yrs—Mar. 20



Lloyd F. George
Financial
25 yrs—Mar. 3



Raymond Grenier
Japan Room
25 yrs—Mar. 25



Joseph Salerno
Foundry
25 yrs—Mar. 30



M. Nicola Sciandra
Wire Mill
25 yrs—Mar. 18



Howard Walsh
Gen. Mfg. Div.
Oper. Mgr. Ofc.
25 yrs—Mar. 20

New Assignments

General Mfg. Div.

W. P. O'NEILL—Assistant to the Accounting Manager

J. W. HESSEL—Cost and Budget Supervisor

MICHAEL KUBA—Foreman, Dept. 6, Coupling.

Finance

LEONARD F. LEGANZA—Director of Corporate Management Information Services

JEREMY E. JOHNSON—Manager of Corporate Systems and Procedures

WILLIAM CAMPBELL—Manager of Corporate Data Processing Dept.

Jet To Caribbean For 1966 Vacation

A 15-day "jet" trip to the Caribbean is being planned by the SERA for Scovill employees and their families for the July, 1966 shutdown period. Leaving Waterbury on Saturday, July 2nd, for Kennedy International Airport, the tour will return on Sunday, July 17th.

A planning meeting is to be held at the SERA on Tuesday, April 5th, at 8 p.m. All interested are invited to call

Daylight Saving

Daylight Saving Time will be resumed in the State of Connecticut on Sunday, April 24, 1966. Most people will set their clocks one hour ahead before going to bed on Saturday night, however, the official time for the change will be 2:01 a.m. on Sunday.

All clocks in the Waterbury Divisions will be advanced one hour; outside clocks will be marked "D.S.T."

Retirements

Effective April 1, 1966

FLORENCIO ALVES, gas pump attendant in Casting—36 years' service.

PHILIP BIANCHINI, furnace liner in Casting—32 years' service.

MICHAEL CERMOLA, forge press operator in Hot Forge—40 years.

JULIAN HAYRE, rotary wire pointer operator in Rod Mill—15.6 years.

ELIZABETH LAPERLE, buffer in Cosmetics—15.1 years' service.

ITALO MARCHETTI, furnace liner in Casting—48 years.

the Employee Activities Office, Ext. 834, for a detailed itinerary.

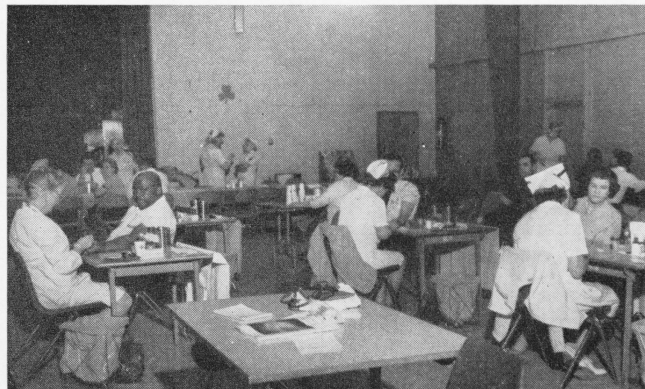
March Blood Donor Day Sees 226 Volunteers, Netting 181 Units

Maintaining their fine pattern set in other years, employees in District #1 turned out in fine style on March 15th to donate a unit of blood. Other "regulars" joined

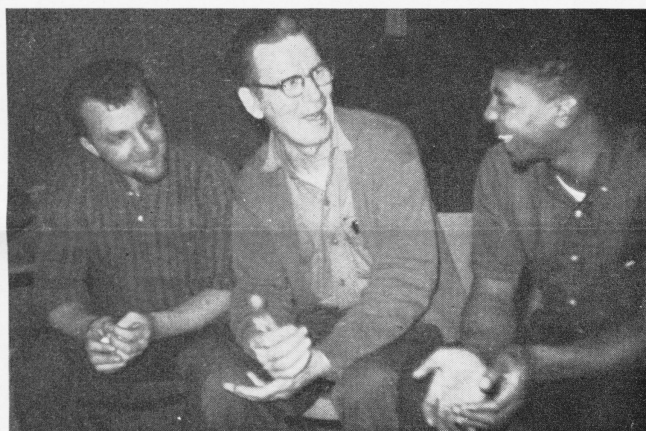
those in the Closure, Cosmetic and Maintenance divisions to net a total of 181 pints of blood. Pictured here are some of the "old timers" as well as new-comers.



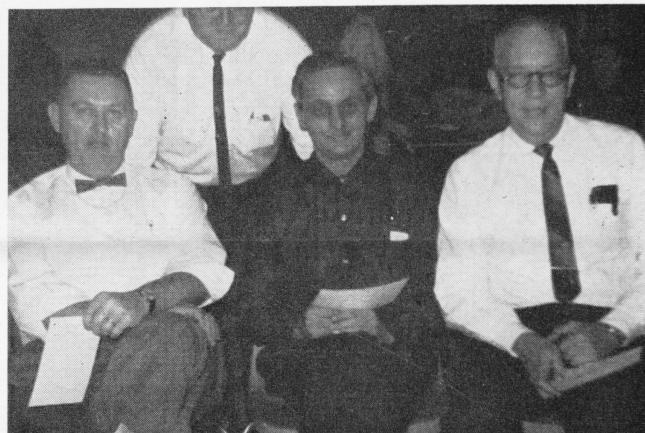
Temperature taking is one of the first phases of donating blood. Here old-timers David Mulcahey (he received a 2-gallon pin), John Lengyel, Anthony Laudate, and Conrad Sansoucie take the process in stride although first-time donor Irving Beal looks a bit apprehensive.



Blood count and test are next in line for prospective donors. Here, Samuel Stephens (who has given 9 units), Philip Rasmussen (center, partly hidden), 10 units, and Lois Candee, who received her 1-gallon pin at this time, are checked and will then be ready for the blood-taking.



Possibly holding the Scovill high-donor-record is Adam Balkus (center) of the Chucking Dept. He tells new donors Robert Delage and Bert Pittman that "there's nothing to it" as they marvel at his record of 61 units of blood donated to date. "You feel much better for giving," says Adam.



A total of 138 units is represented in this group. Tom Perry (standing) co-chairman of the day, has given 46 units. He says, "you're on your way, boys, keep it up", to E. E. Coley, who has given 33 units, Earl Tooker, 26 units, and Lucien Wolff, 33. Our amateur cameraman says, "I'm sorry, Tom."



Agnes Strickulis, first-time donor, agrees with Craig Barber that it is not half as bad as she had expected and she hopes that in due time she will get up to Craig's record — he was awarded his 5-gallon pin, for a total of 40 units of blood donated.



Marion Thompson is the recipient of a 3-gallon pin, designating the donation of her 24th unit of blood. William Rogers, a first-time donor, smiles his approval. Having just given his first unit of blood, he's ready for a good cup of hot coffee and an appetizing, nourishing sandwich or two.

Girls' Club News

By Vi Pelletier & Mary Schifiliti

A most hearty welcome to new members: *Bernice Orodeckis, Edith Lawrence, Adeline Fabiani, Margaret Bergin, and Irene Belmare* of Fuze Assembly; to *Josephine Collella, Lucille Sciarra and Florence Clemente* of Cosmetic Assembly; to *Esther Lena and Mary Grady* of Mill Accounting; to *Jessie Ciarleglio* of Cosmetic Accounting and to *Sunda Ward* of Employee Relations.

We are happy to report that our roster now shows 558 active members and 139 retired members.

Our card party and hat show was something to see. Many girls bought hats—possibly to wear on that bus trip to New York on the 26th? Five bus loads of women were on this trip!

Final preparations are being made for our annual banquet scheduled for May 1st at Waverly Inn. Tickets are being issued to members only and are non-transferrable. We have more members than the Inn can accommodate and, in all fairness to our members, please do not ask for tickets for non-Club members.

This year's program is sure to be a delight. Guest speaker is Betty Kimball. An alumna of the Yale School of Drama, she is the author and narrator of "Kimball Comments" on Radio WRCH in New Britain. For many years she has worked with and interviewed many interesting people and she will tell us about her "Experiences in Radio". Incidentally, she is well known throughout the state as a theatre director and, as guest director, presented several plays at the Waterbury Civic Theatre. A delightful afternoon is in store for all who attend the banquet.

The annual meeting and election of officers will be held on Monday, April 18th. Ellen Donovan, Ext. 777, chairman of the Nominating Committee says she still is interested in hearing names of members who would like to serve on the Council. A social program is being planned to follow the meeting, so be sure to mark this date on your calendar now—see you then!

Obituaries

EDWARD KIRLEY died on January 30, 1966. An estimator in Screw Machine Production—40 years' service.

LOUIS BROCKHOEFT died on February 21, 1966. Warehouse foreman, Cincinnati—34 years' service.

CHARLES SHUGRUE died on March 1, 1966. A carpenter in the Carpenter Shop—30 years' service.

JOHN DIDENKO died on March 2, 1966. Retired, Blanking Room in September, 1957—40 years' service.

MICHAEL CAPUTO died on March 12, 1966. Retired, North Mill, in January, 1955—31 years' service.

PATRICK EGAN died on March 17, 1966. Retired, Press 1, in February, 1962—19 years' service.

Tax Adjustment Act of 1966

Effective May 1, 1966, the present 14% withholding rate will be replaced by graduated withholding rates in six steps, ranging from 14% to 30%. The six graduated withholding rates would be 14%, 15%, 17%, 20%, 25%, and 30%, respectively effective for remuneration paid after April 30, 1966.

The primary objective of graduated withholding is to reduce underwithholding with the new rates designed to more closely approximate the 14%-70% income tax schedule which determines the taxpayer's final liability.

Shown below are the revised tax

tables for weekly and bi-weekly paid employees. Booklets explaining the Act and containing complete tax schedules will be distributed to employees with their pay checks before April 30th.

Employees are advised to check their Form W-4 Withholding Exemption Certificate to determine how much income tax will be deducted from your pay. You may wish to change it. If so, contact your foreman who will secure Form W-4 cards from the Payroll Department. Do this as quickly as possible.

Withholding Rates Effective May 1, 1966

If the amount of wages is:

The amount of income tax to be withheld shall be:

WEEKLY PAID

Single Person — Including Head of Household:

Not over \$4	0.
Over \$4 but not over \$13	14% of excess over \$4.
Over \$13 but not over \$23	\$1.26 plus 15% of excess over \$13.
Over \$23 but not over \$85	\$2.76 plus 17% of excess over \$23.
Over \$85 but not over \$169	\$13.30 plus 20% of excess over \$85.
Over \$169 but not over \$212	\$30.10 plus 25% of excess over \$169.
Over \$212	\$40.85 plus 30% of excess over \$212.

Married Person:

Not over \$4	0.
Over \$4 but not over \$23	14% of excess over \$4.
Over \$23 but not over \$85	\$2.66 plus 15% of excess over \$23.
Over \$85 but not over \$169	\$11.96 plus 17% of excess over \$85.
Over \$169 but not over \$340	\$26.24 plus 20% of excess over \$169.
Over \$340 but not over \$423	\$60.44 plus 25% of excess over \$340.
Over \$423	\$81.19 plus 30% of excess over \$423.

BIWEEKLY PAID

Single Person — Including Head of Household:

Not over \$8	0.
\$8 but not over \$27	14% of excess over \$8.
Over \$27 but not over \$46	\$2.66 plus 15% of excess over \$27.
Over \$46 but not over \$169	\$5.51 plus 17% of excess over \$46.
Over \$169 but not over \$338	\$26.42 plus 20% of excess over \$169.
Over \$338 but not over \$423	\$60.22 plus 25% of excess over \$338.
Over \$423	\$81.47 plus 30% of excess over \$423.

Married Person:

Not over \$8	0.
Over \$8 but not over \$46	14% of excess over \$8.
Over \$46 but not over \$169	\$5.32 plus 15% of excess over \$46.
Over \$169 but not over \$338	\$23.77 plus 17% of excess over \$169.
Over \$338 but not over \$681	\$52.50 plus 20% of excess over \$338.
Over \$681 but not over \$846	\$121.10 plus 25% of excess over \$681.
Over \$846	\$162.35 plus 30% of excess over \$846.

Volleyball League

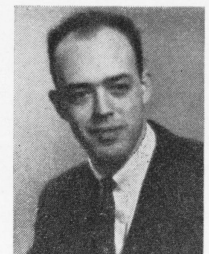
The Scovill volleyball league brought its 10-week season of play to a close with the Extrusion team declared champions with a score of 16-4.

The Closure Team's standing of 12-8 placed them in second position while the Mis-fits took 3rd place with their final standing of 2-18.

Prizes will be awarded to the winning team at a banquet to be held soon.

Training Course

TOOLMAKER. *Peter Lawton was graduated as of March 14, 1966, and has been assigned to the Manufacturing Eyelet Toolroom.*



BULK RATE

U.S. POSTAGE

PAID

PERMIT No. 123



Published by
SCOVILL MANUFACTURING COMPANY
 99 Mill Street, Waterbury, Conn.
Return Requested

SCOVILL BULLETIN

EDITOR

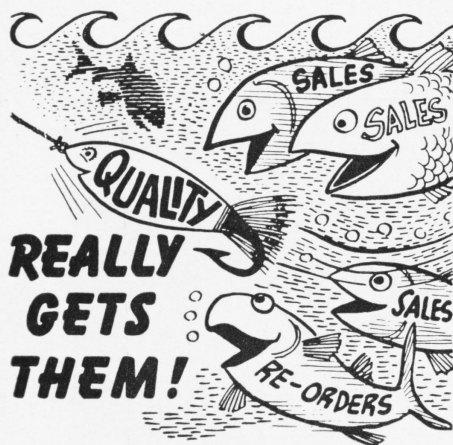
Margaret E. Fenske

PHOTOGRAPHER

Adam Wolak

Published the first week of each month in the interest of Scovill men and women. The deadline for classified advertising and news items is the 20th of the month preceding issue.

Our address: Scovill Bulletin, P.O. Box 1820, Waterbury, Conn.



Classified Advertising

For Sale

1957 Chevy 3/4 ton pick-up truck; has '59 rebuilt engine, heavy duty rear wheels, utility body, 4-speed transmission, excellent condition, \$600. 753-1318 between 4:30 and 7:00 p.m. weekdays, or all day Saturday, Sunday.

1960 Model Superflex oil burner, 34,000 btu, includes floor mat, stove pipe, two 2-gal. oil cans. 753-1509 after 3 p.m. or 879-2052.

S & W 38.44 revolver, 5 1/2" bbl. target sights and grips, A-1 condition, \$55. 755-1778 after 3:30 p.m.

Combination aluminum storm door, 32" x 80"; 3 pr. new 90" drapes. 753-4226.

1964 Karman Ghia, excellent condition. 754-1715 after 4 p.m.

1958 Wolverine 16' boat, all equipped; rebuilt 1956 Evinrude Lark 30 hp motor, electric starter, excellent condition; boat and motor, \$550; snow plow for jeep, stainless steel, \$35. 753-6489 weekdays after 4 p.m., Sunday after 11:30 a.m.

1961 Falcon 4-door station wagon, excellent condition, true out, standard transmission. 758-4142.

Set of golf clubs, including bag and cart. 753-9381 after 5 p.m.

5 tubeless 7.50 x 14 tires, Firestone Deluxe Champion whitewalls, original tread, \$35. 753-0369 after 6 p.m. or weekends.

Living room sofa and slipcover, \$40; chair and slip cover, \$20; double bed, bookcase headboard with glass top, \$35; bathroom sink, cold/hot water faucets and trap, \$15. 879-2226 after 4:30 p.m.

1962 Corvair (700) series, black with red inside, good tires and condition. 274-2691 after 4:30 p.m.

13 1/2' Marine plywood boat, 20 hp motor, \$160; exhaust fan, \$10. 754-5748.

Accordian, like new. 879-2037.

1964 International station wagon, V-8, all-power; 1963 Buick V-8, vinyl covered roof, power seats/steering. 274-4580 after 5 p.m.

Craftsman drill press, attachments, \$40; 2 1/2 hp Johnson Seahorse outboard motor, \$35; Rotary blade meat slicer, non-electric, \$5; hand lawn mower, \$3; pipe threader, vice and cutter, \$15; high chair, mahogany spinet Chickering piano, maple dining room set. 753-7565.

30-gal. galvanized water tank with gas arm heater, \$10; wooden table and 4 chairs, \$10; 1/4" to 2" pipe threader set with vice, \$18; baby carriage, \$5; full-sized Melodiana accordian, plays clar/mast; with adjustable shoulder straps, handsome carrying case, book stand/tripod, \$75; 5-week old turquoise kitchen set, imitation marble top, 4 chairs, cost \$90, asking \$70. 879-1204.

Credit Union No. 1

Members of Scovill Employee Credit Union #1 are asked to turn in their passbooks as soon as possible so that they may be audited.

50-pc. Lionel train set, set up on board. 756-6898 after 5 p.m.

Girl's nylon dresses, sizes 10-12-14; other coats, skirts, blouses, dresses; child's floor model pooltable. 274-3549 between 4-8 p.m.

Fedders dehumidifier, almost new, excellent condition. 755-0052 after 5 p.m.

Hettrick highwall tent, 9 x 17', sleeps 8, 2-yrs. old. 879-0405.

4' deep, 20' diameter, swimming pool, with filter and ladder. Cheshire, 628-6215 after 5 p.m.

Man's brand new dark wool suit, 46, long, \$14; girl's red wool spring coat, size 3-4, \$3. 756-8416.

1964 Pontiac GTO burgundy, 4-speed with three 2-bbl carburetors, racing cam and solid lifters, Doug-headers, posi-traction rear end; service obligation. 755-5964.

Riding type lawn mower, \$50; dog house, 3' wide, 4' long, 5' high, shingled roof, \$15. 756-1828.

3 section castiron furnace, used only 3 years. 753-3313.

13' Aluminum camp trailer, fully equipped, electricity, running water, gas light, stove, ice box; sleeps 4; mint condition. 756-0685.

Philco refrigerator with freezer, good working condition; suitable for small family or cottage, \$30. 729-3430 or 146 Woodbine St., Union City.

1965 Triumph TR-4A British racing car, green, spoke wheels, radio, AM-FM, heater, tonneau and boot, luggage rack. 753-6174 after 4 p.m.

Set of golf clubs, left handed: 2 to 9 irons, 1-2-3 woods, 1 doz. new balls, brand new bag, \$75. 754-5951 after 3 p.m.

Baby's full size crib, complete, \$10; playpen, \$2; bathinette, \$3. 755-9151.

Venetian blinds, for double windows, new, excellent condition. 753-7972 after 5 p.m.

1958 Dodge Coronet, 2-tone acqua/white, 2-door hardtop; whitewall tires, radio, heater, new tires, \$425. 879-2297.

Wanted To Buy

Apache or Nimrod tent trailer. 879-0405.

6-volt car radio for 1955 Ford. 729-8682 after 4 p.m.

Set of golf clubs. 263-2721 after 4:00 p.m.

Tenants Wanted

3 rooms, 3rd floor, heat, hot water, stove, refrigerator, residential area, quiet, \$60. 753-5011.

4 rooms, 1st floor, vicinity St. Joseph's church, quiet, residential. 755-8624.

4 rooms, 2nd floor, heat and hot water. Inquire 10 Webb St., 1st floor.

2 1/2 rooms, 3rd floor, hot water heat and bath. Visconti Ave. 753-3313.

Other

Seeking shorefront cottage to rent week of July 4th or 11th. 755-6219.

Wanted—the magazine Scientific American for the year 1945. Ext. 778.